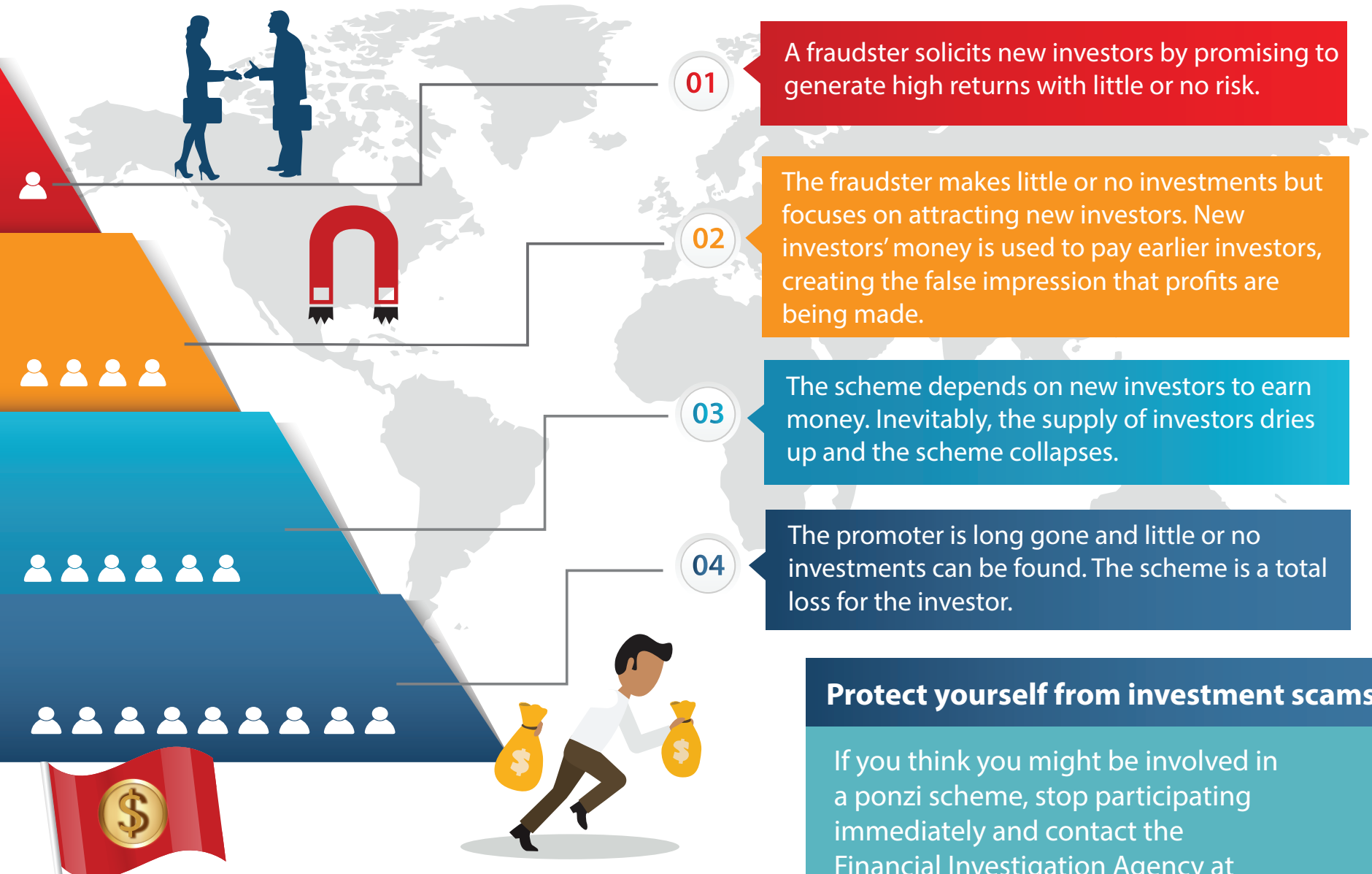


# P NZI SCHEMES

A **ponzi scheme** is a type of “get rich” scam that involves payment of returns to existing investors from funds contributed by new investors.

## How It Works



### Protect yourself from investment scams

If you think you might be involved in a ponzi scheme, stop participating immediately and contact the Financial Investigation Agency at 494-1335. You should also warn other people you think may have been approached about joining the scheme.



### What are some Ponzi Scheme "Red Flags"?

- High investment returns with little or no risk.
- Returns depend on bringing in other investors.
- Overly consistent returns.
- Nonexistent paperwork.



**MONEY MATTERS BVI**

Make your money work for you  
[www.moneymattersbvi.org](http://www.moneymattersbvi.org)  
852-4777

